



Z-E3756



INSTALLATION MANUAL

EN

COMPATIBILITY LIST

Model	Model Version	Model Year
FIAT Ducato III	250/251	2006 – 2011
FIAT Ducato III	250/251	2011 – 2014
FIAT Ducato III	250/251	from 2014
Citroën Jumper II	250/250D/250L	from 2006
Peugeot Boxer II	250/251	from 2006

CAUTION

- The installation of the ZENEC system should be carried out by an authorized installer. Specific knowledge and tools are required to do the installation. Incorrect installation can cause damage to the vehicle and the ZENEC system.
- Correct functioning can only be guaranteed when you use the ZENEC original accessories included in the kit or optionally available. The ZENEC system and the original accessories must under no circumstance be modified or altered. Inappropriate actions can cause damage to the vehicle and the ZENEC system.

NOTE

- The target vehicle must offer factory provision for the installation of a radio. The ZENEC system is not compatible with vehicles that are equipped with an OE radio or OE navigation system ex works.
- This device installation manual applies to vehicle platforms appearing in the above compatibility list, and in a condition as offered by the respective vehicle manufacturer. Other differing configurations and installations of motorhome manufacturers are not covered by this installation manual. If you have questions or vehicle-specific problems please contact the relevant motorhome manufacturer.
- The ZENEC system is equipped with an integrated DAB+ receiver. To make use of this tuner system you will need a suitable DAB antenna (not included in kit) that must be connected to the ZENEC system.
- If the target vehicle is equipped with a multifunction steering wheel, in order to support the steering wheel remote functions a stalk interface is required (separate accessory).
- Software updates to the ZENEC system are installed with a USB memory device. Therefore when fitting the system make sure that the USB connection of the ZENEC system will still be accessible later (installation of USB extension cable or USB hub).
- If you have questions or problems relating to the ZENEC system, please contact the dealer from whom you purchased it.

THE KIT INCLUDES

No.	Article	Qty
1	ZENEC system	1
2	Mounting frame	1
3	Phillips screws	4
4	Remote control	2
5	microSD card with adapter	1
6	GPS antenna	1
7	Bluetooth microphone	1

8	Antenna adapter ISO/DIN	1
9	Main connection cable	1
10	USB extension cable	2
11	24-pin connection cable (4.2, MZone, AV-IN)	1
12	20-pin connection cable (Mic, Cam, IR-IN)	1
13	Connection cable parking brake	1
14	Metal plate for GPS antenna	1
15	Double-sided adhesive pad	1

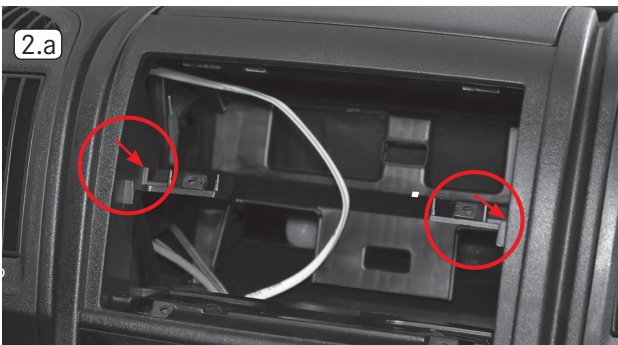
TOOLS REQUIRED

- Torx screwdriver T25
- Phillips screwdriver
- Release tool made of plastic
- Hand saw or equivalent
- File
- Insulating tape

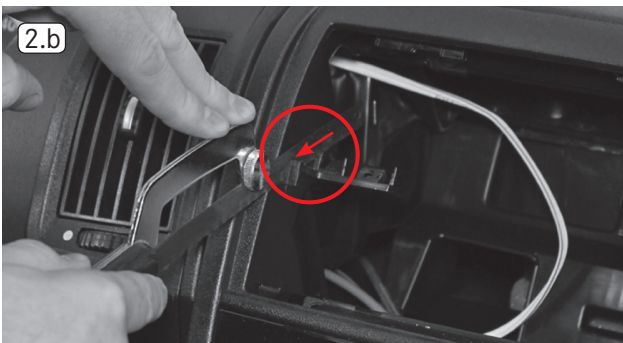
REMOVAL WORK AND PREPARATION:



1. Remove both storage compartments in accordance with the manufacturer's information.



- 2.a Cut off the left and right plastic holders for the storage compartments as flush as possible.

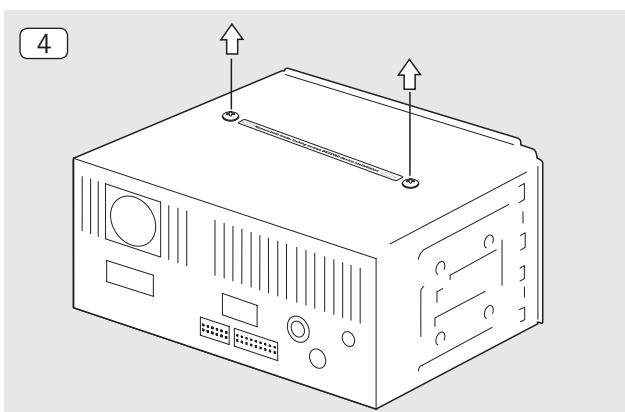


- 2.b Use a suitable saw to do this, and then a file to remove any protrusions still present.

INSTALLATION:



3. Remove the two original Torx screws at the top (T25).



4. Before installing the ZENEC system (No. 1) remove the two transport securing screws of the loader mechanism.

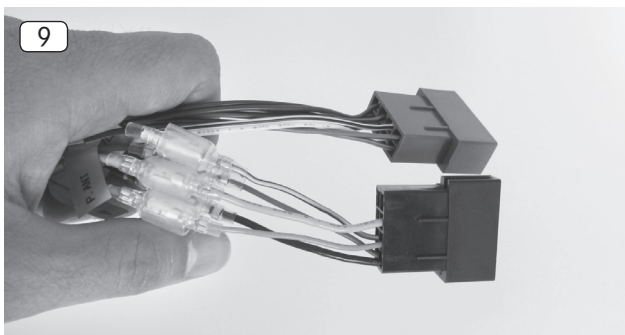


- 5.a Insert the mounting frame (No. 2) at an angle from above into the radio slot.



- 5.b Screw down the mounting frame at the top and bottom with the four Phillips screws (No. 3) supplied with the ZENEC system kit.

6. (No picture)
Fit the GPS antenna (No. 6) at a suitable place, and make sure that the GPS reception is not adversely affected due to shadowing by metallic vehicle parts (thermal glazing etc.). Use the metal plate supplied as a base for the GPS antenna to improve its reception, depending on the situation. Next, run the connecting cable to the radio slot.
7. (No picture)
If you wish to use it, fit the external Bluetooth microphone (No. 7) in a suitable location, and run the connecting cable to the radio slot. Depending on your choice of an external or device-internal microphone, the microphone source for the Bluetooth mode must be correspondingly changed in the device menu.
8. (No picture)
Run the USB extension cable (No. 10) from the radio slot to the position you want.



9. Connect the main cable (No. 9) of the ZENEC system (No. 1) to the ISO plug connectors of the vehicle.



10. Connect all the cables to the ZENEC system (No. 1): those previously run in the radio slot, and the original antenna cable. If necessary, use the ISO DIN antenna adapter (No. 8) included in the kit.

Next slide the ZENEC system carefully into the radio slot until it locks in place.

NOTE

- Make sure that all connectors at the rear of the unit have sufficient room and are not bent.
- For vehicles with an original FIAT active antenna, it is necessary to ensure a power supply for the antenna. Pay particular attention that the plug connectors of the P.ANT lead of the main connection cable (No. 9) are connected together.
- Connectors without a retaining mechanism must be secured with insulating tape.

COMMISSIONING

Make sure that the vehicle is outside, and that the GPS reception is not adversely affected by any shadowing (trees, high buildings etc.). Now insert the navigation software SD card (No. 5) supplied into the SD card slot of the ZENEC system, and start it in order to establish a sat fix. Make sure that the vehicle is not moved until the sat fix is established. Now press the NAV button to start the navigation mode, and choose map view. Once your present location is shown means, the sat fix has been established successfully. This can take 3 to 5 minutes. You can now use the ZENEC system.

Finally carry out a general functional test, and make the basic settings. Also ensure that no fault warnings appear on the vehicle side.

CONNECTION DIAGRAM

